



Down Draft Benches

The most efficient wet dust collectors on the market, the Uni-Wash series of wet dust collectors are capable of collecting dust down to 3 micron in size consuming only 3" wg. static pressure

Wet type dust collection is required for the safe collection of combustible metal dust. Wet Type Dust Collection has also been used effectively in many other difficult applications in place of cartridge collectors. ProVent's unique scrub design has been an industry standard for over 40 years and continues to lead the industry in Wet Type Dust Collection efficiency.

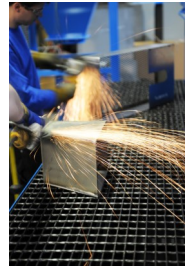
Standard Features

- **Integral High Efficiency Fan Assemblies**
 - AMCA Rated, Integral Direct Drive Fan Assemblies with Keyless Concentric Bushings
- **Control Integrations**
 - Multiple configurations available to meet your specific requirements
- **Stainless Steel Scrub Components**
 - Superior construction where it is needed the most.
- **2-Part Epoxy Internal Tank Coating**
 - AmeriLock-2 by Ameron provides exceptional corrosion protection in harsh industrial and marine corrosive environments.
- **Urethane Mastic External Coating**
 - Durethane DTM by PPG chemically resistant and extremely durable. Provides excellent corrosion resistance and has superior color and gloss retention.
- **97% Efficient utilizing only 3" wg**
 - The most efficient wet dust collector available which has become an industry standard over the past 40 years.
- **NFPA Compliant with AccuScrub Controls**
 - Touchscreen controls / NEMA 3R/4/12 Enclosure / Ultrasonic water level control / Face mounted rotary disconnect / E-Stop / 24V components / Stack light with audible and

COMBUSTIBLE METALS

ProVent's line of Uni-Wash Wet Type Downdraft Bench Dust Collectors meets or exceeds NFPA #484 for combustible metals including:

- Aluminum Dust
- Titanium Dust
- Magnesium Dust
- Zirconium Dust
- Tantalum Dust



BEYOND COMBUSTIBLE METALS

FOOD PROCESSING

ProVent has provided the food industry and others with 100% 304 Stainless Steel Wet Type Dust Collectors for the collection of a variety of airborne contaminants. If you think your application might benefit from the best designed, most efficient wet type dust collector on the market, look to ProVent and water filtration.

PHARMACEUTICAL

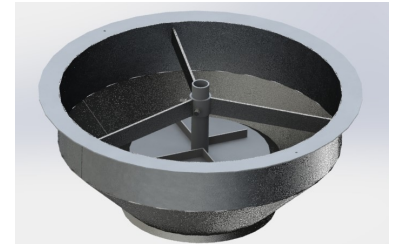
Utilizing water as a filtration device for pharmaceutical and biochemical dusts has its benefits. Beyond the cost savings of not having to replace filter cartridges, employee exposure to potentially hazardous dust during this maintenance operation is relieved.



Uni-Wash—The Industry’s Leading Scrub Technology

The Uni-Wash scrub technology has been continually manufactured for over 40 years. This tried and true orifice / impingement technology offers many benefits unmatched by other manufactures of wet type dust collection. Utilizing airflow to produce the scrub means that there are no pumps or nozzles to clog. Additionally, this makes our wet type dust collectors more energy efficient than other designs.

The stainless steel components of the Uni-Wash scrub are designed with a large opening that will never clog and can be cleaned effectively reducing maintenance costs. The use of the optional Sani-Ball cleaning system reduces maintenance even further.



Efficiencies of up to 99% can be reached due to the incredible turbulence created by the Uni-Wash scrub. In this turbulence, a high rate of particulate to water contact is made increasing the efficiency while consuming a mere 3" wg.

A WORD ABOUT NFPA 484

NFPA 9.4.12.6.1 “The power supply to the dust-producing equipment shall be interlocked with the airflow from the exhaust blower and the liquid-level controller of the collector so that improper functioning of the dust-collection system will shut down the equipment it serves..”

ProVent Delivers: Both water level and motor controls are integrated into a single control panel with an easy to monitor 7" color LCD touchscreen. Water level is controlled by an accurate ultrasonic device.

The NFPA Safety Package option integrates airflow monitoring, audio/visual alarms, a positive vent fan (when required) and auxiliary contact into the control panel. The auxiliary contact provides the customer the ability to connect the dust producing equipment to the dust collector per NFPA guidelines.



Popular Options



Uni-Wash HMI

Includes touchscreen interface w/ graphics, ultrasonic water-level control, variable frequency drive, 24v components, E-Stop, safely shuts down on low / high water.

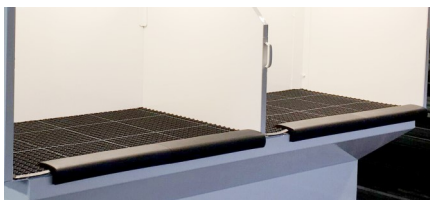
Uni-Wash PRO—NFPA Compliant

Includes everything in the Uni-Wash HMI plus NFPA compliance features. NFPA compliant alarms, shutdown on low airflow, all necessary temperature inputs as required for NFPA compliance, auxiliary relay to shut down dust emitting equipment when the dust collector shuts down.



Custom side and ceiling panels along with optional flush mounted lighting in the ceiling and side panels.

The Sani-Ball cleaning system uses powerful 316 stainless steel spray nozzles to simplify and improve the cleaning process.



Padded arm rests create a comfortable working environment.

ProVent Silencers reduce the noise level produced by the exhausted air.



Other options include custom deck materials, integrated footrests, crane slots in ceiling panel.

sales@proventilation.com

P. 800-610-6010

Manufactured in Harbor Springs, Michigan



Specifications

	DDB-10	DDB-20	DDB-30	DDB-40	DDB-50	DDB-60	DDB-75	DDB-100	DDB-125
Volume / CFM	1,000	2,000	3,000	4,000	5,000	6,000	7,500	10,000	12,500
Deck Velocity (Feet Per Minute)	436	479	516	434	490	434	490	490	490
Bench Width	26.75	34	40.75	65	72	97.5	108	144	180
Bench Depth	18	26	35	30	30	30	30	30	30
Bench Area (SQ FT)	3.34	6.14	9.9	13.54	15.00	20.31	22.5	30.00	37.50
Work Deck Height	30.125	30.125	30.125	36	36.125	36.125	36.125	36.125	36.125
Dry Weight	900	1200	1550	2800	3100	3450	4300	4800	5300
Tank Capacity (US GAL)	55	100	133	280	330	420	495	660	825
Primary Voltage	460Volt 3 Phase 60 Hertz								
Full Load Amps	1.2	3.59	5.98	5.98	5.98	8.97	11.96	17.95	(x2) 8.97
Motor RPM	1800	3600	1800	1800	1800	1800	1800	1800	(x2)1800
Motor HP	1	3	5	5	5	7.5	10	15	(2x) 7.5
Fan Size	TEK400	TEK280	GPBI-182 75%	GPBI-182 95%	GPBI-200 100%	GPBI-200 100%	GPBI-222 85%	GPBI-245 80%	(x2) GPBI-222 70%
Fan Type	Injection Molded GRP Polyimide, Backward Curved Airfoil, AMCA Rated, Spark-Resistant Corrosion Proof, Stronger than Steel / Half the Weight / Lower HP			GPBI ,AMCA Rated Aluminum					
Housing Construction	10 Gauge and 3/16" Steel, Solid Welded								
Work Deck Construction	1.5" x 1.5" square x 1.5" Tall Pattern, Molded Fiberglass, 65% Resin by Weight, Excellent Strength and Corrosion Resistance								
Work Deck Load Capacity (lbs)800	800	800	800	800	800	800	800	800	800
Scrub Components	304 Stainless Steel								
Internal Tank Coating	AmerLock-2 by Ameron is a 2-Part Epoxy that provides exceptional corrosion protection in harsh industrial & marine corrosive environments								
Motor Controls	NEMA 12 Start / Stop Station with Overload Protection. Optional NFPA Package adds Horn / Light Alarm, Automatic Shutdown on Low Airflow and High / Low Water, adds Transformer, Disconnect, Auxiliary Connection for Interlock								
Water Level Controls	NEMA 12 Start/Stop Station with overload protection, Optional HMI Option replaces the standard motor controls with a custom NEMA 12 control panel which includes E-stop, disconnect, LCD touchscreen, and variable frequency drive (VFD). It replaces the standard float type water level control valve with an ultrasonic eye and solenoid valve in the supply plumbing for electronic water make-up, and high and low level emergency shutdown. Primary voltage to VFD is 460V/3Ph/60hz. Secondary voltage for internal control components is 24V.								