



## Cartridge Dust Collectors

Intercept™ PKG-Series Vertical Cartridge Dust Collectors capture and remove most industrial and foundry dusts from exhaust system air. A unique CAM-LOC cartridge locking mechanism securely seals the cartridge header plate to the tube sheet to prevent dust bypass. The PKG Series offers standard performance specifications that are suitable for most applications.

### Standard Features

- **Continuous Pulse Filter Cleaning**  
Timed pulse filter cleaning standard with optional differential pressure pulse cleaning.
- **All Welded Heavy Sheet Steel**  
12 Gauge Steel will stand up to years of daily abuse
- **Filter Racking System**  
Provides a tight and even seal between the filter and fan assembly
- **Vertically Mounted Filters**  
Vertically mounted filters clean better when pulsed allowing gravity to settle particulate to the bottom of the dust collector.
- **Urethane Mastic External Coating**  
Durethane DTM by PPG chemically resistant and extremely durable. Provides excellent corrosion resistance with superior color and gloss retention.
- **Welded Couplings**  
1" NPT for fire control equipment.
- **Photohelic Switch / Gauge**  
Mounted in a NEMA 12 control panel.

### FILTRATION OPTIONS

#### FIRE RETARDANT NANO WEB

##### STANDARD

Protects from errant sparks making contact with the filter and causing a fire. Able to capture smoke and fumes with particle size down to .3 micron in size.

#### FIRE RETARDANT

Protects from errant sparks making contact with the filter and causing a fire. Efficient for grinding and sanding dusts > 3 micron.

#### NANO WEB

Nano Web filter cartridges are able to capture smoke and fumes with particle size down to .3 micron in size.

#### POLYESTER

Polyester filters provide excellent filtration and are the most efficiently cleaned when pulsed.



## Popular Options



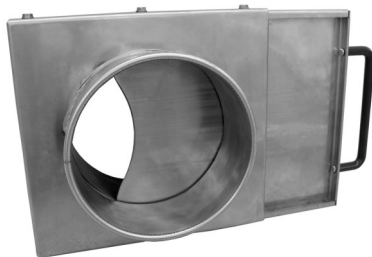
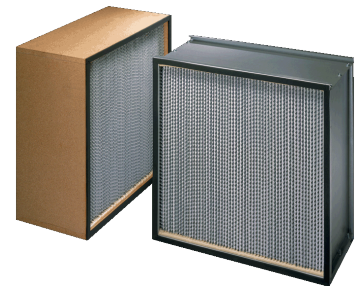
Explosion Vents are available on all Intercept PV dust collectors. Explosion Vents offer protection from unsafe pressure in dust collection systems

ProVent Silencers reduce the noise level produced by the exhausted air. ProVent manufactures silencers that are perfectly matched to the collectors they serve.



NFPA requires that an explosion isolation device be installed on all suction side ducts that transport material with a KST value above zero.

If superior filtration is needed, a HEPA after-filter is available raising efficiencies to 99.999% down to .3 micron.



Manual slide gate for sealing off the dust collector during collection drum change out.

## Specifications

	PKG-4	PKG-4-Laser	PKG-4+	PKG-6	PKG-6-Laser	PKG-6+	PKG-9	PKG-9-Laser	PKG-9+
<b>Air Flow (CFM)</b>	1,500	1,200	2,000	2,500	1,800	3,000	4,000	2,500	4,500
<b>TEFC Motor (HP)</b>	3		5			10		7.5	15
<b>Fan</b>	Direct drive, backward inclined welded mild steel fan								
<b>Total SP (in. Wg)</b>	8	9		8	10		8	10	
<b>Pulse Controller</b>	Enclosed timer (NEMA 4) 115V, single phase, control panel ready to accept 115V connection, shipped loose for end user convenience								
<b>Number of Pulse Valves</b>	2						3		
<b>Standard Filter</b>	Nano-Web fiber, fire retardant, MERV 15								
<b>Number of Filters</b>	4			6			9		
<b>Filter Height (in.)</b>	30								
<b>Square Feet of Media</b>	830			1,245			1,872		
<b>Air to Cloth Ratio</b>	1.8	1.4	2.4	2.0	1.4	2.4	2.1	1.3	2.4
<b>Filter Racking</b>	Vertically mounted filters, sealing via dual rail push cam locking assembly								
<b>Housing Construction</b>	10 ga. welded steel								
<b>External Coating</b>	Durethane DTM by PPG, Urethane mastic coating, Vent Blue color								
<b>Compressed Air Requirement</b>	80-90 psi required hook up, 1" NPT coupling								
<b>Fire Control</b>	0.5" NPT fittings welded into housing for the connection of fire control equipment								